



**"PUSHY" TABLE LAMP BY STUDIO KAHINDO
BUILDING PLAN**

SAFETY FIRST!!



These plans are provided for informational and educational purposes only. By using these plans, you agree that you are solely responsible for your own safety, the quality of your work, and the outcome of the final product.

The creator of these plans assumes no liability for any injury, damage, loss, or legal issues that may arise from the use or misuse of this information.

By following these plans, you acknowledge and agree that:

- You are competent in the use of woodworking tools and machinery
- You will use appropriate personal protective equipment (PPE), including eye protection, hearing protection, and dust masks
- You will ensure all tools are properly maintained and used according to manufacturer guidelines

This project involves working with electrical components, which can be hazardous and may result in electric shock, fire, or serious injury if performed incorrectly.

By using these plans, you acknowledge that:

- You understand basic electrical principles and safe wiring practices
- You will disconnect power sources before working on any electrical components

"PUSHY" A TABLE LAMP BY STUDIO KAHINDO

LIST OF MATERIALS & TOOLS



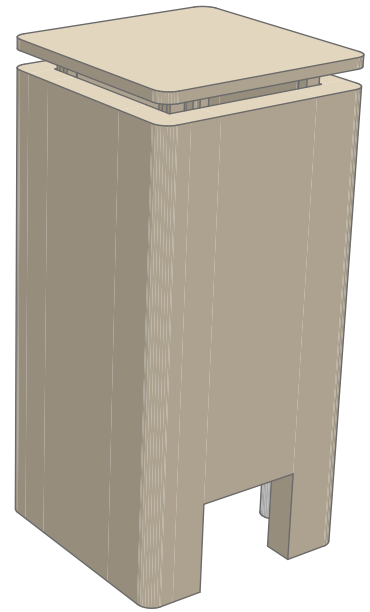
PINE BOARD



PLYWOOD



WOOD GLUE



X1 B22 BATTEN HOLDER



X4 PUSH DOOR CATCH



X1 PUSHBUTTON SWITCH



SANDPAPER



10A PLUG TOP



X1 B22 LED BULB



2M 2 CORE CABLE



PARCHMENT PAPER



WOOD CHISEL



TENON HANDSAW



DOVETAIL PULL SAW



SCREWDRIVER SET



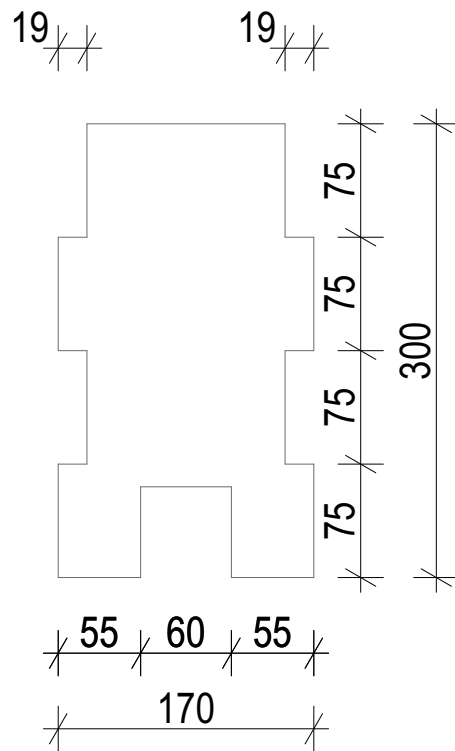
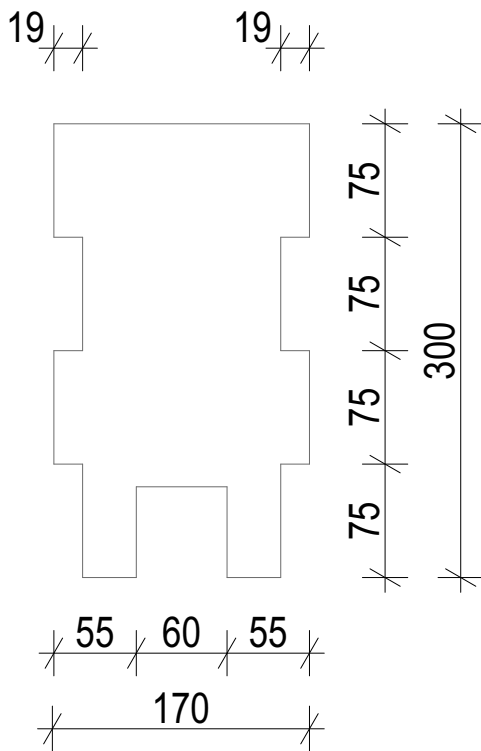
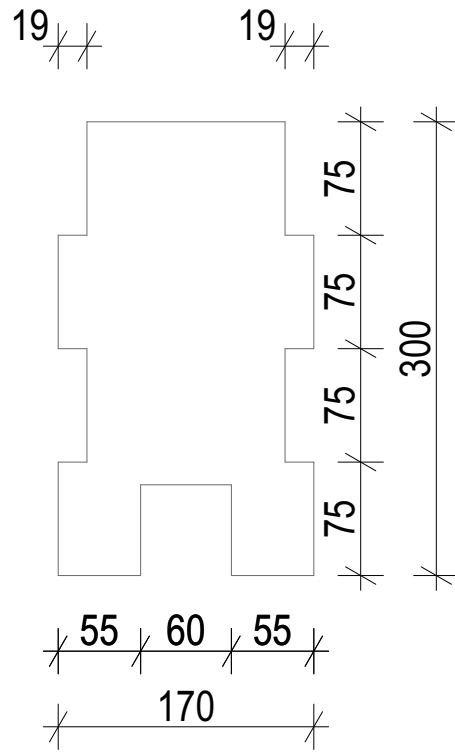
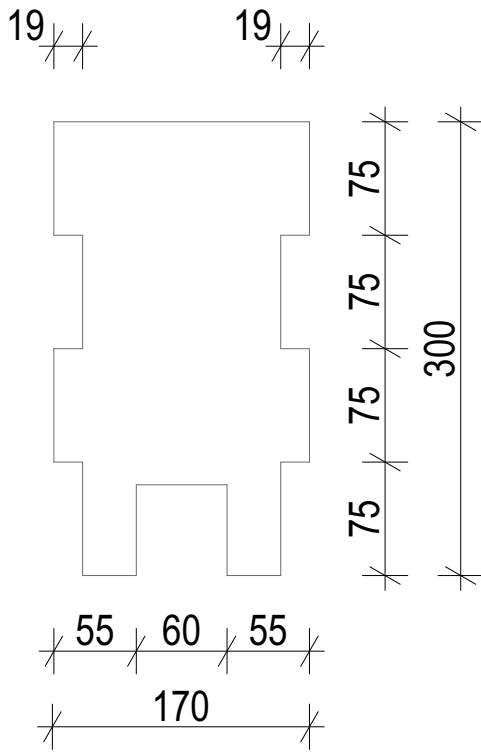
Brand Affiliation Disclaimer

Any trademarks, brand names, or products mentioned are the property of their respective owners. Their use does not imply any affiliation, endorsement, or sponsorship.

"PUSHY" A TABLE LAMP BY STUDIO KAHINDO

CUT LIST: BASE

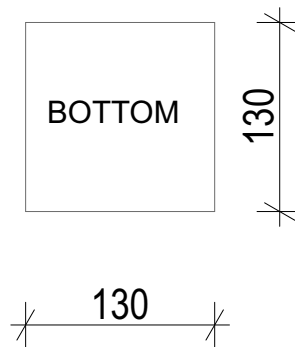
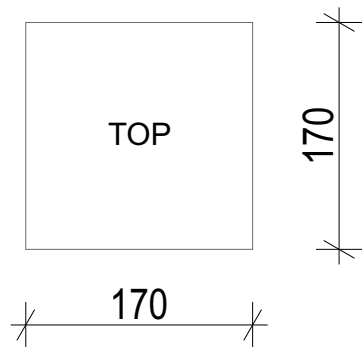
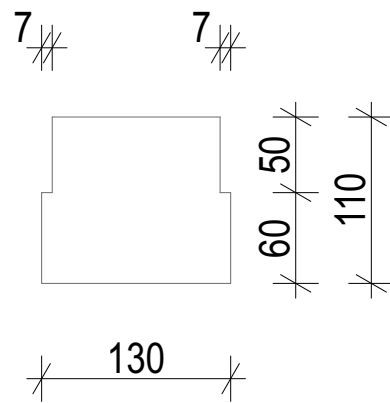
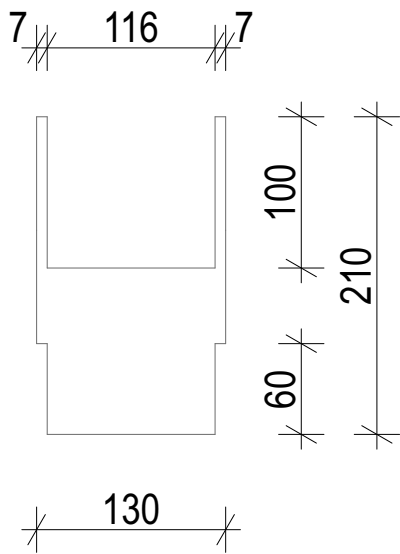
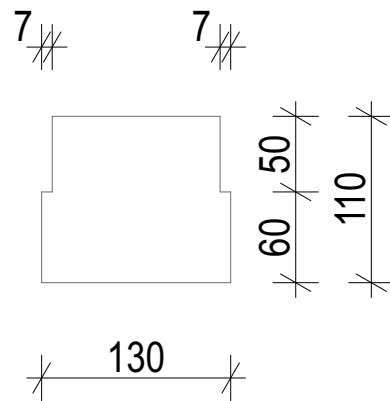
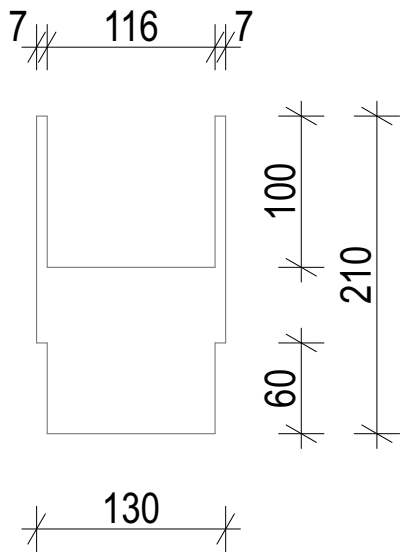
DIMENSIONS IN MM
19MM THICK PINE



"PUSHY" A TABLE LAMP BY STUDIO KAHINDO

CUT LIST: LIGHT COMPARTMENT

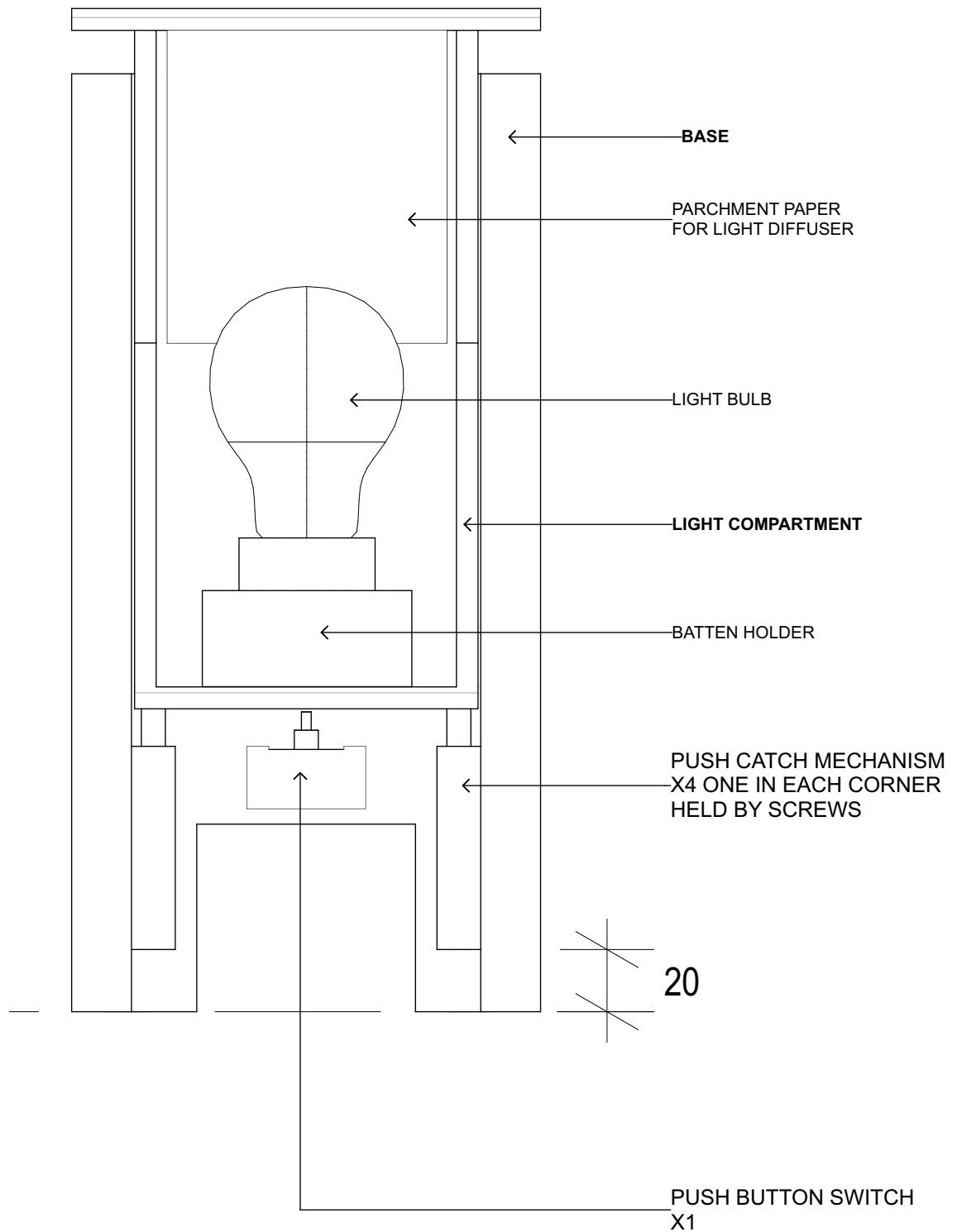
DIMENSIONS IN MM
7MM THICK PLYWOOD



"PUSHY" A TABLE LAMP BY STUDIO KAHINDO

SECTION

POSITION OF PARTS



"PUSHY" A TABLE LAMP BY STUDIO KAHINDO

ELECTRICAL: PUSH BUTTON SWITCH

SAFETY FIRST!!

HOW TO WIRE A PUSH BUTTON SWITCH

Wiring our Small Push Button Switch

Plastic switch suitable for both 2 and 3 core flex

to the lampholder

from the power supply

Live - Brown
Neutral - Blue
Earth - Green/Yellow (optional - If using 2 core cable, ignore the earth terminal)

NB: AS STOCK SOMETIMES ALTERS FROM OUR SUPPLIERS WE CANNOT GUARANTEE THESE DIAGRAMS THEREFORE WE ALWAYS RECOMMEND YOU CONSULT A QUALIFIED ELECTRICIAN

HOW TO WIRE A FOOT/FLOOR SWITCH

Wiring our Inline Foot/Floor Switch

Plastic switch suitable for both 2 and 3 core flex

to the lampholder

from the power supply

The cable/cord sheath must be installed underneath the cable restraint

when wiring our transparent switch
Insert an extra contact (if needed) at point A

Live - Brown
Neutral - Blue
Earth - Green/Yellow (optional - If using 2 core cable, ignore the earth terminal)

NB: AS STOCK SOMETIMES ALTERS FROM OUR SUPPLIERS WE CANNOT GUARANTEE THESE DIAGRAMS THEREFORE WE ALWAYS RECOMMEND YOU CONSULT A QUALIFIED ELECTRICIAN

INFORMATION BY LAMPS AND LIGHTS, NO AFFILIATION.
<https://www.lampsandlights.co.uk/faq-items/how-do-i-wire-up-my-switch/>

"PUSHY" A TABLE LAMP BY STUDIO KAHINDO

NOTES

"PUSHY" A TABLE LAMP BY STUDIO KAHINDO